

NON-CONTACT TONOMETER

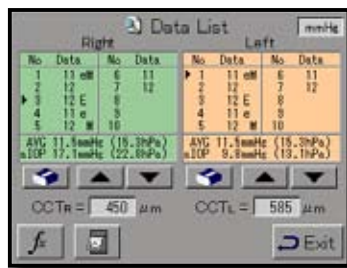
▶ *FRIENDLY TONOMETER FT-1000*



- *Touch Screen Alignment System*
- *Cornea Thickness Related IOP Correction*
- *Auto Alignment + Auto Shot*
- *Soft and Silent Air Pulse*
- *High Speed Measurement*



Auto Alignment / Auto Shot



Data List

FT means Friendly Tonometer. Friendly because of the very silent and soft air pulse. This makes the FT-1000 very convenient for the patient.

Touch Screen Alignment System

The 5.7 inch coloured touch screen is used as operating monitor as well as for displaying all measured values. You can even move the unit in all directions by simply touching the screen. All commands can be done via touch screen.

Cornea Thickness Related IOP

You can easily adjust the measured IOP data according to the central corneal thickness. The calculation formula used by the FT-1000 is individually adjustable to your own preference.

Auto Alignment + Auto Shot

The handling of the FT-1000 is very easy - it does almost everything by itself. Alignment and measurement are done automatically. You just roughly align the system towards the patient eye and the rest is taken care of by the instrument. With a tip on the screen the system automatically moves to the left or right eye.

Soft and Silent Air Pulse

For the comfort of your patient the FT-1000 is designed to use a very soft air pulse. Even the noise generated by the system is reduced to the minimum. This relaxes your patient and ensures highly accurate results.

High Speed Measurement

If you choose the multi shot option the system produces up to three air pulses in an extremely short sequence (0.1 seconds each).



Power Motion Joystick

SPECIFICATIONS

Measuring Intraocular Pressure

Measurement Range	0-60 mm Hg (0-30 mm Hg/25-60 mm Hg)
Measurement	1 mm Hg (1 hPa) increments within the measurement range

Energy and other Consumption

Energy of visible light and infrared light Light for measuring intraocular pressure	
Light Source	Light emitting diode
Wavelength	880 nm
Output	Alignment < 50 μ W (Limit 1: 210 μ W) Measurement < 100 μ W (Limit 1: 3200 μ W, t = 0.05 s)

Sight-fixing Lamp

Light Source	Light emitting diode (3-colour chip)
Wavelength	Red 630 nm Green 520 nm Blue 470 nm
Output	Red < 0.1 μ W (Limit 1: 3.7 μ W) Green < 0.1 μ W (Limit 1: 3.7 μ W) Blue < 0.1 μ W (Limit 1: 3.7 μ W)

Light for Anterior Eye Segment

Light Source	Light emitting diode
Wavelength	780 nm
Output	< 100 μ W (Limit 1: 450 μ W)

1 AEL Class 1 Conforming to IEC 60825-1:2001

Main unit

Built-in Printer	Thermosensitive line printer
Stroke of Moving Section	88 mm (X-axis); 40 mm (Y-axis); 45 mm (Z-axis)
Stroke of Chin Rest	70 mm
Data Output Type	RS-232C
Display	5.7" colour LCD

Dimensions & Electric Requirements

Dimensions WDH	306 x 493 x 463 mm
Weight	Approx. 18.0 kg
Power Supply	AC 100 V to 240 V
Frequency	50/60 Hz
Power Consumption	Less than 85 VA

TOMEY EUROPE
TOMEY GmbH
Am Weichselgarten 19a
91058 Erlangen
Germany
Phone (+49) - 9131 - 77710
Fax (+49) - 9131 - 777120
eMail: info@tomey.de

TOMEY ASIA-PACIFIC
TOMEY CORPORATION JAPAN
2-11-33 Noritakeshinmachi
Nishi-ku, Nagoya 451-0051
Japan
Phone (+81) - 52 - 581-5327
Fax (+81) - 52 - 561-4735
eMail: intl@tomey.co.jp

Visit our internet domain:

www.tomey.de

TOMEY
TECHNOLOGY AND VISION